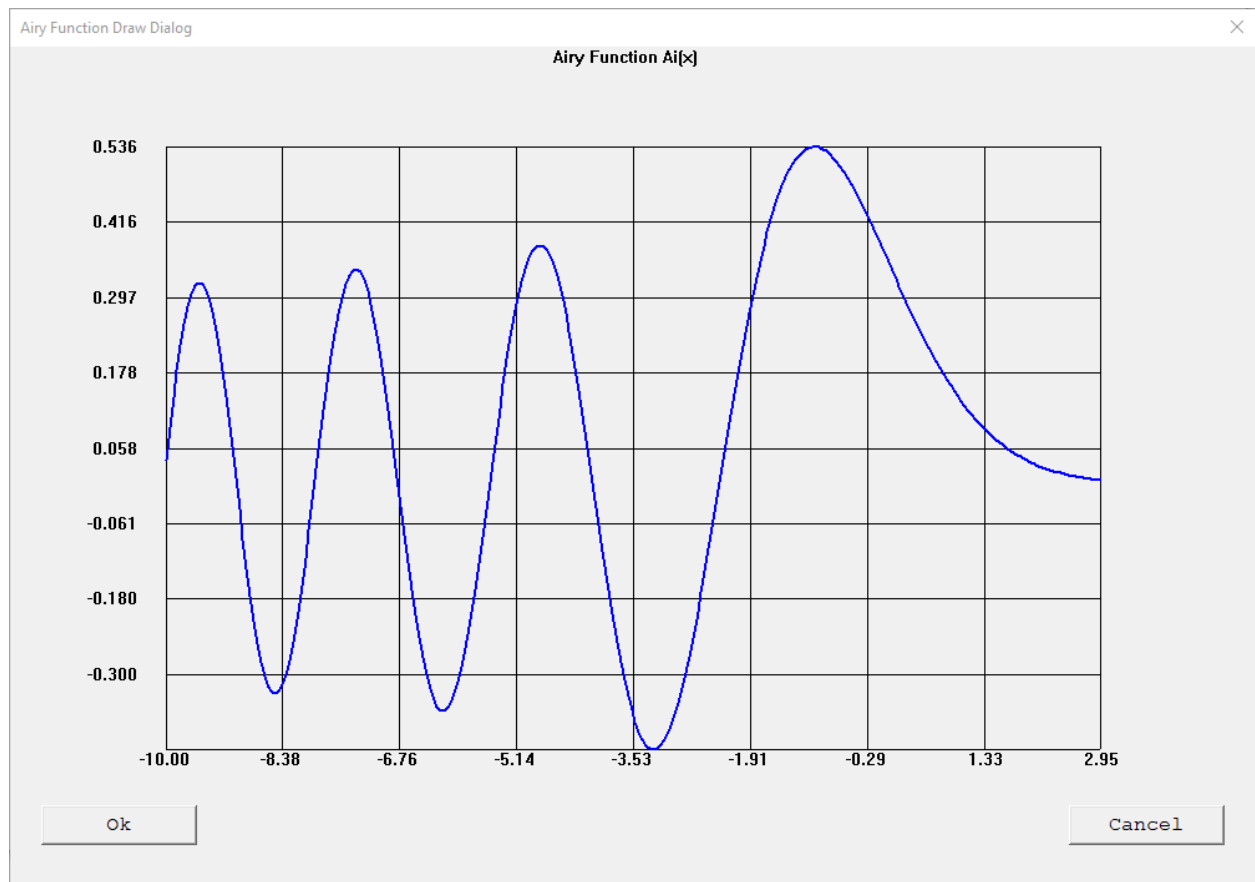
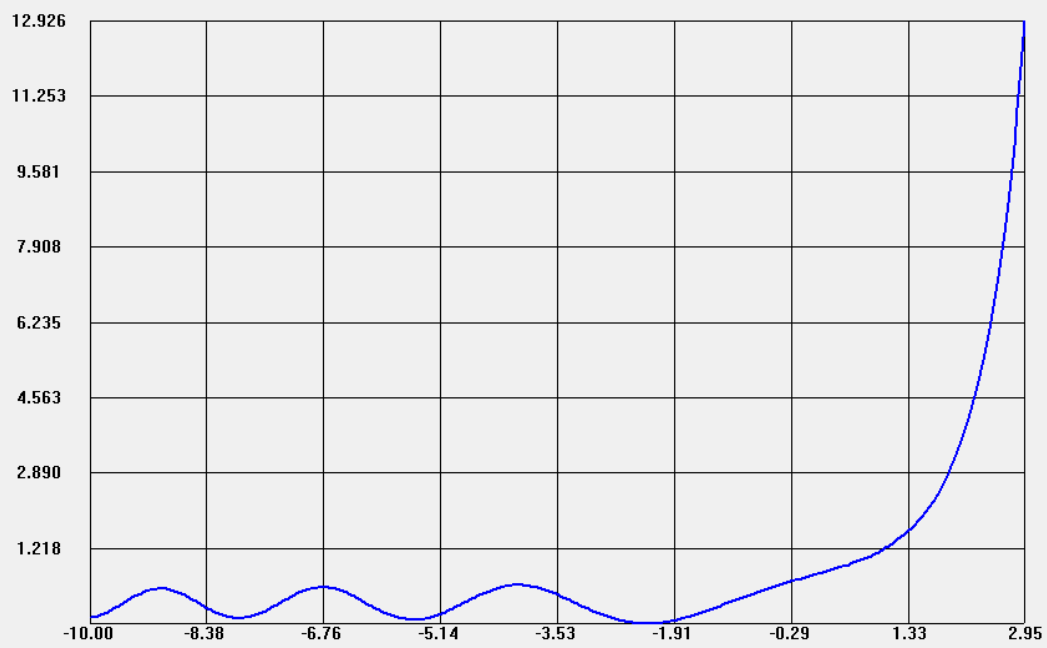


Blog Entry © Wednesday, January 29, 2025, by James Pate Williams, Jr. Three Real Function Families App Graphs

As a reminder the implemented function families are as follows:

1. Airy Functions and Derivatives – $Ai(x)$, $A'(x)$, $Bi(x)$, and $Bi'(x)$
2. Airy Function Family Zeros
3. Fresnel Cosine and Sine Integrals
4. Mathieu Function Family.

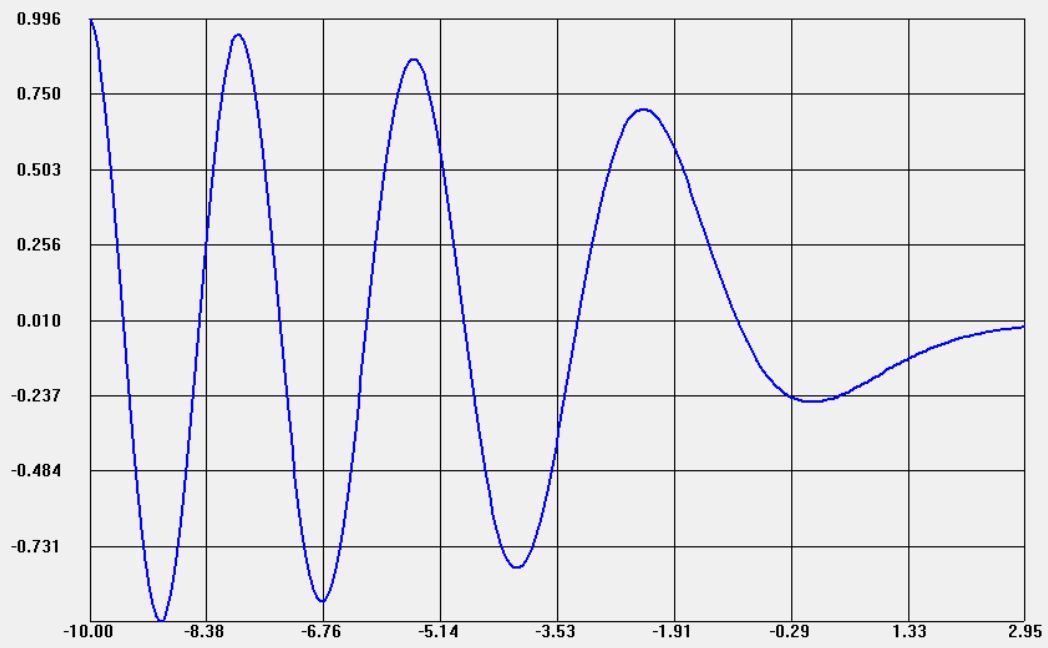


Airy Function $\text{Ai}'[x]$ 

Ok

Cancel

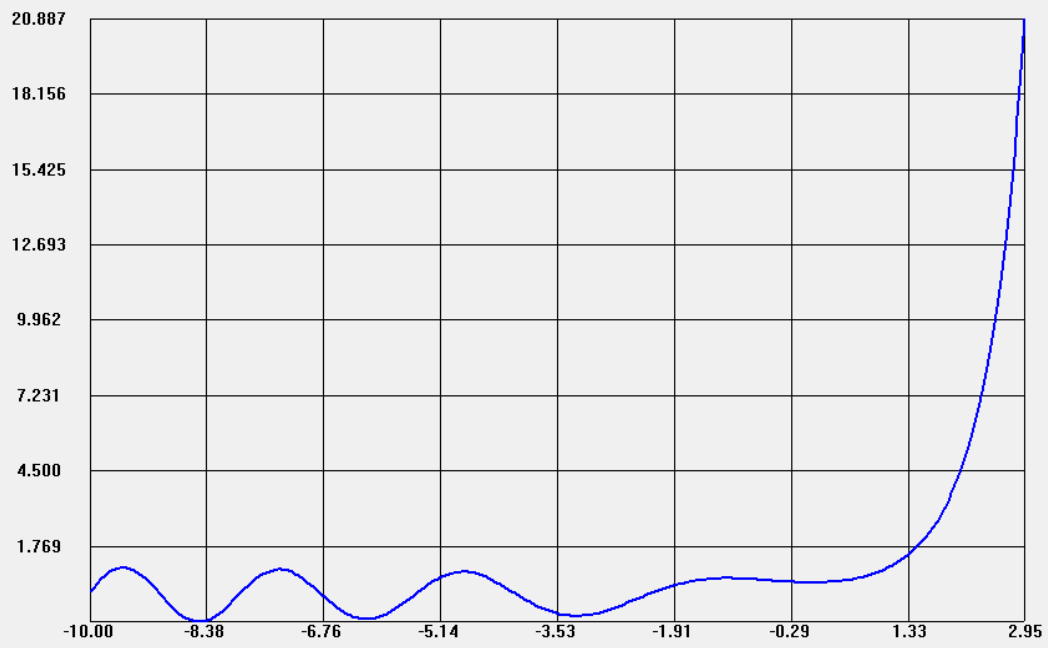
Airy Function Bi(x)



Ok

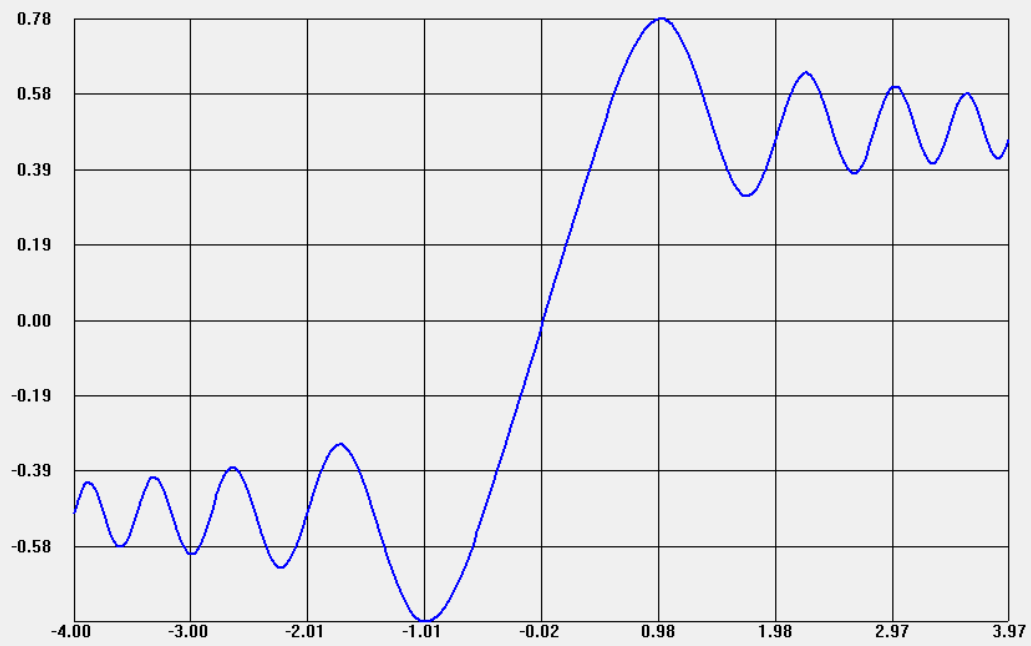
Cancel

Airy Function Bi'[x]



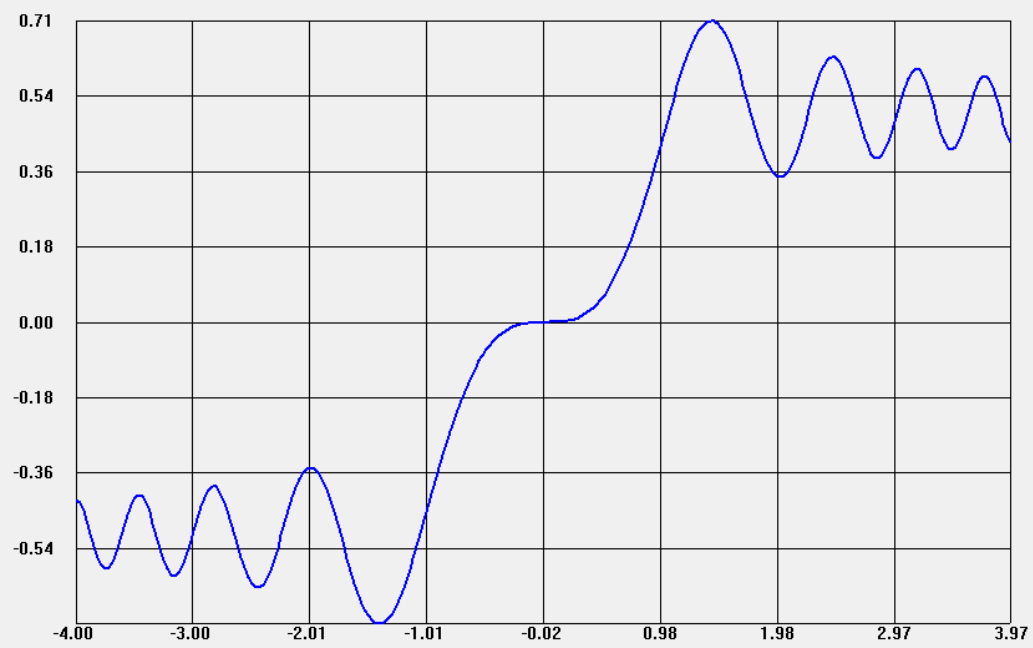
Ok

Cancel

Cosine Fresnel Integral $C(x)$ 

Ok

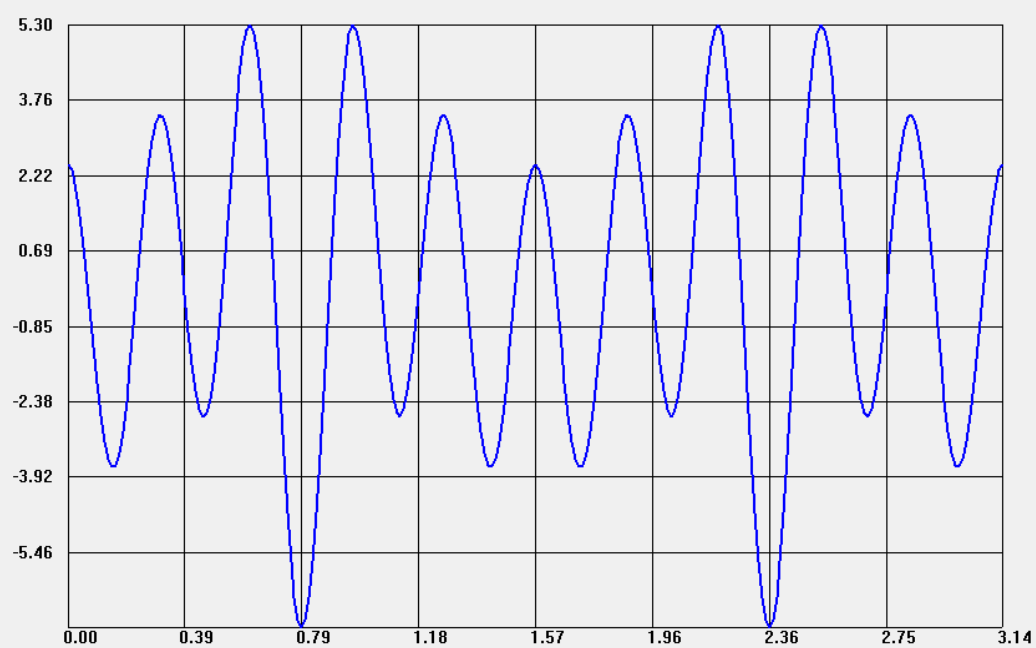
Cancel

Sine Fresnel Integral $S(x)$ 

Ok

Cancel

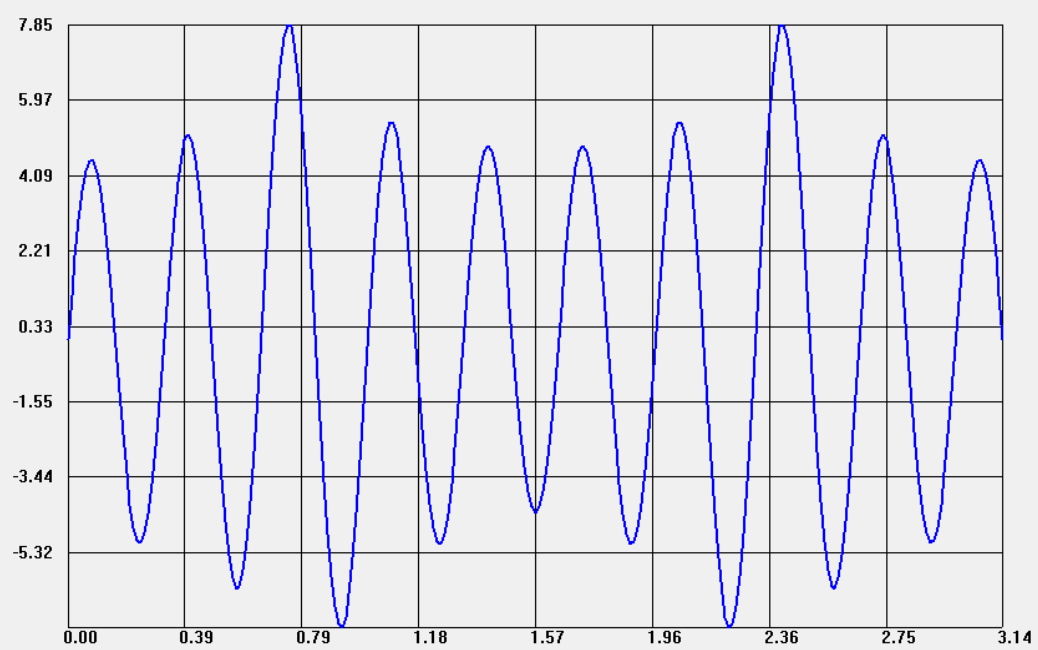
Mathieu Function



ok

Cancel

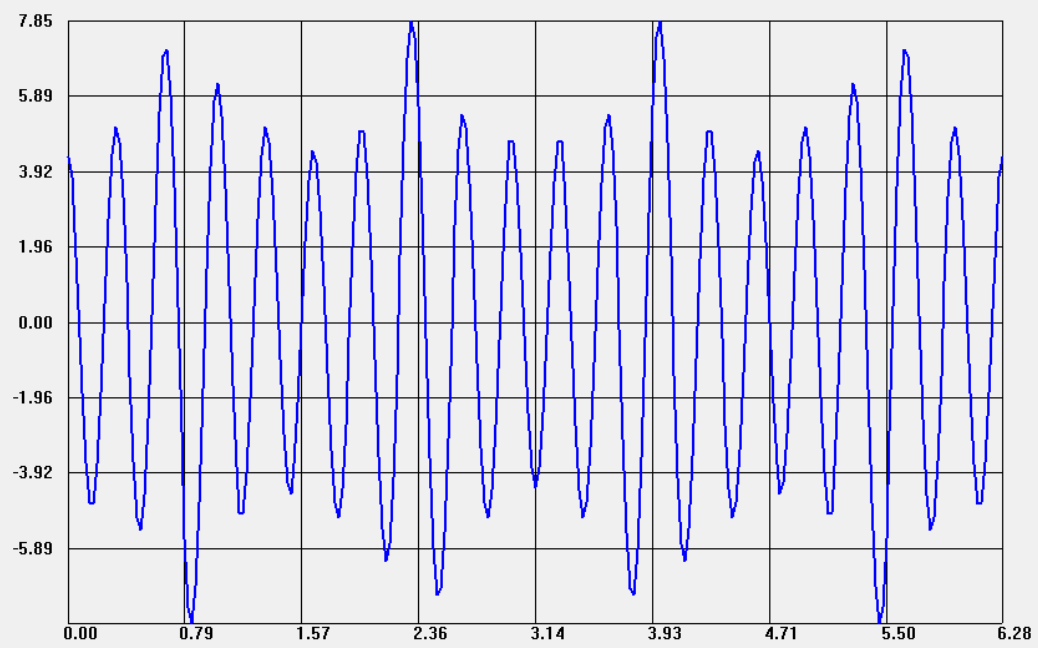
Mathieu Function



Ok

Cancel

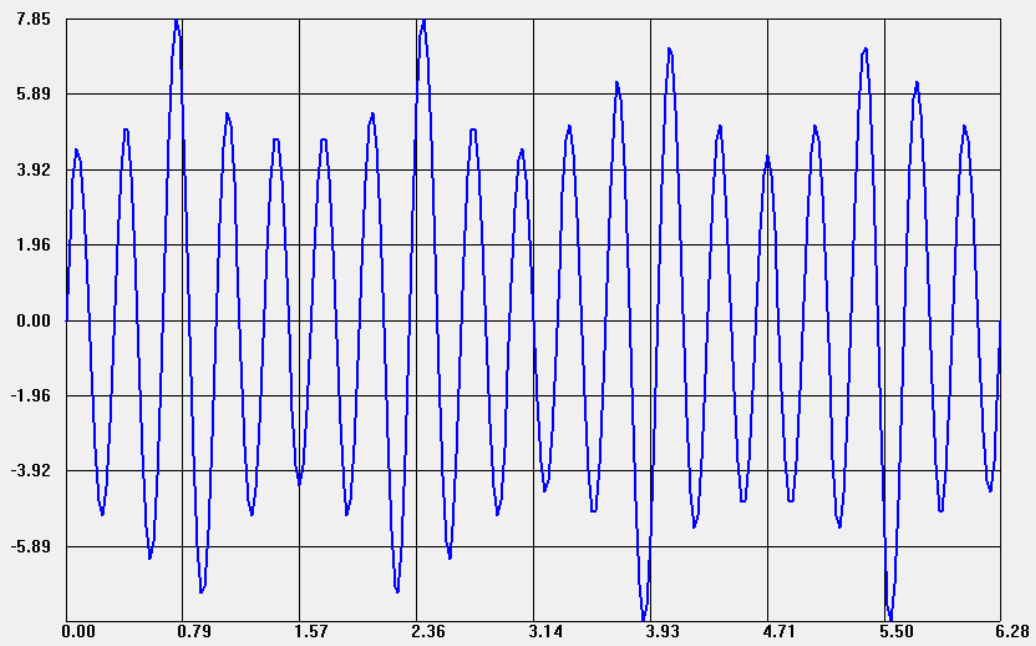
Mathieu Function



Ok

Cancel

Mathieu Function



Ok

Cancel